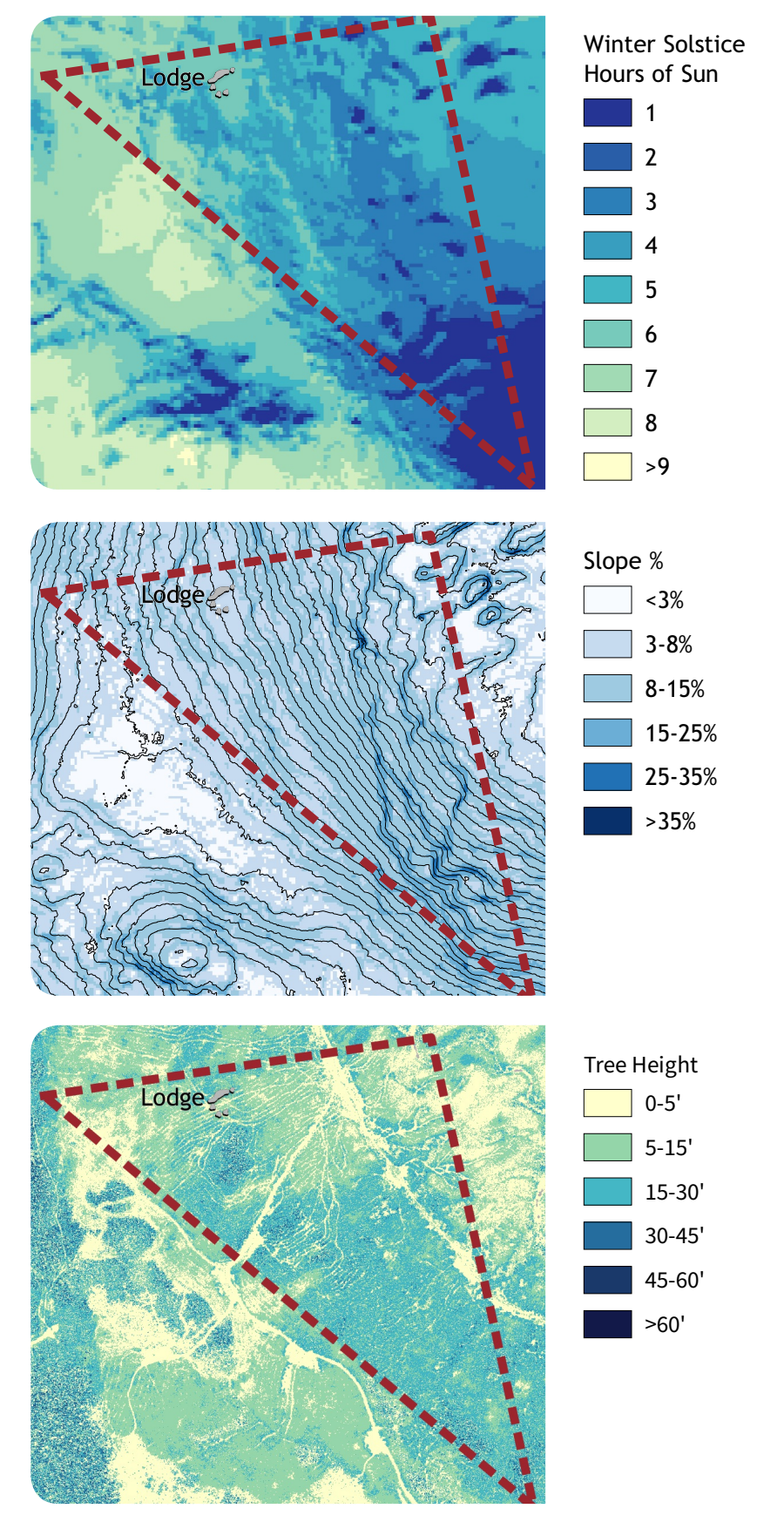
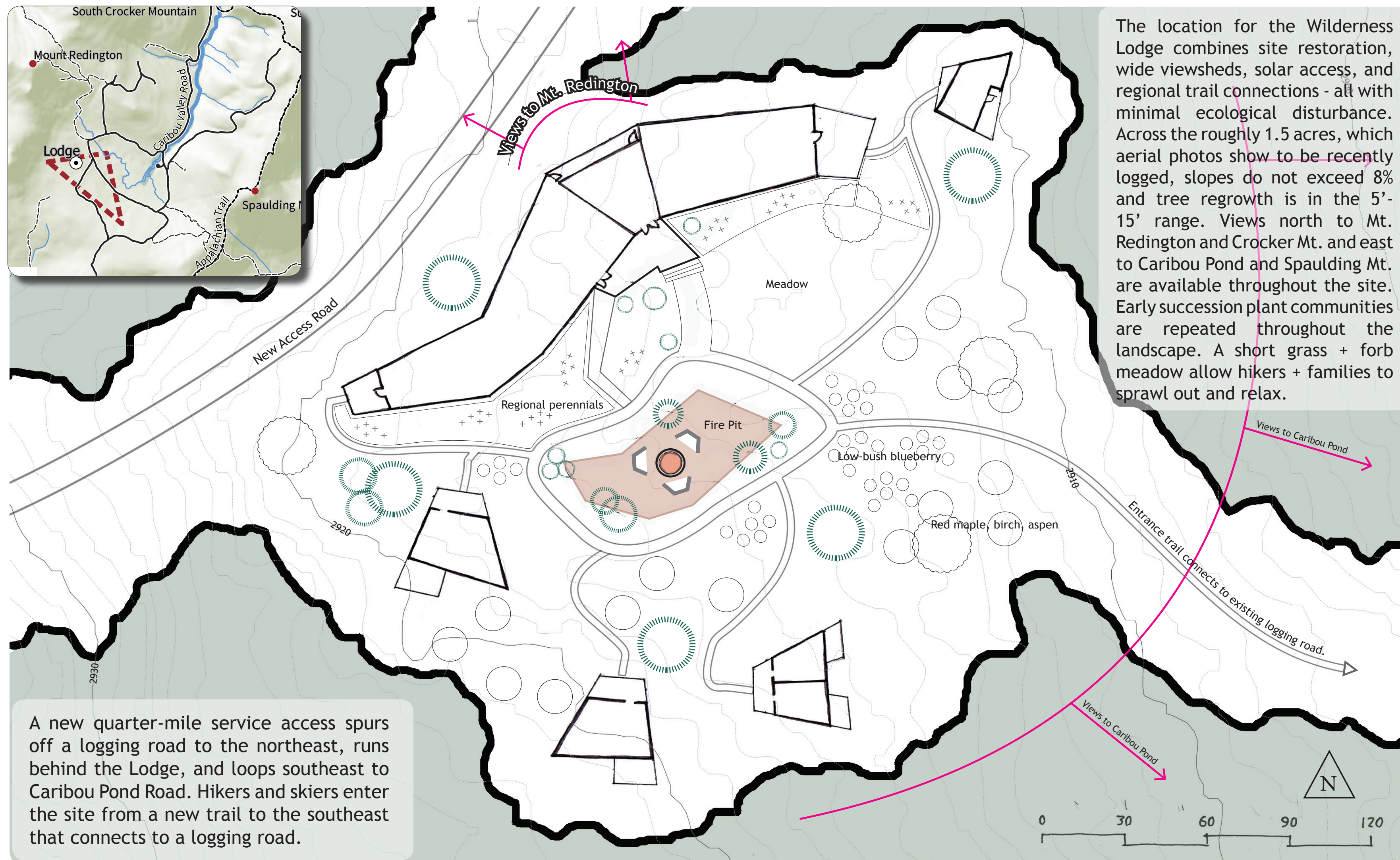


WILDERNESS CONNECTIONS

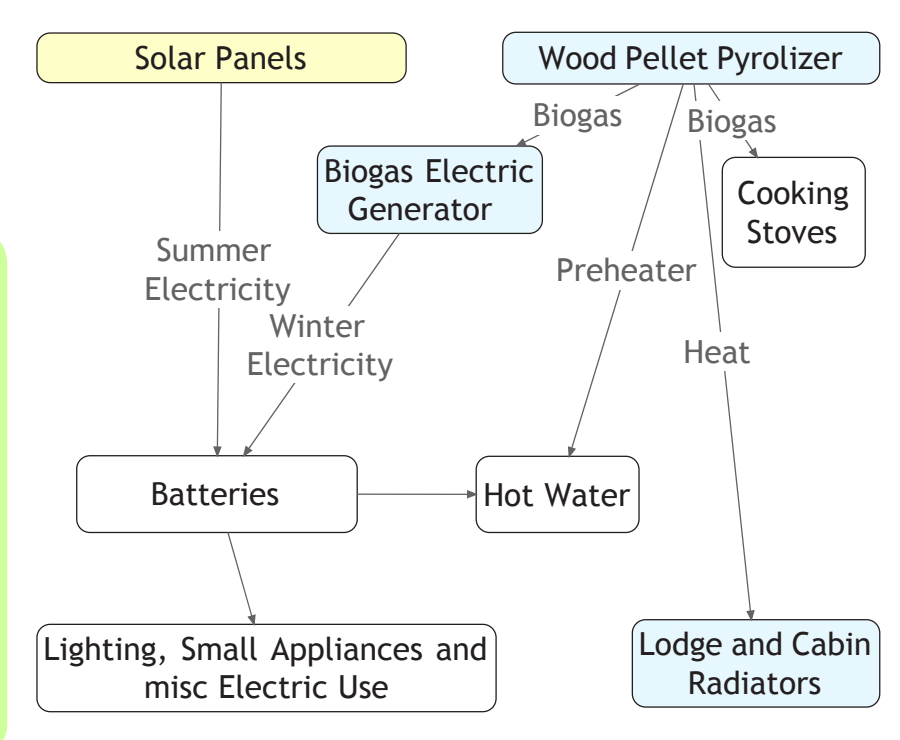
0067

INTO THE WOODS - connecting with nature

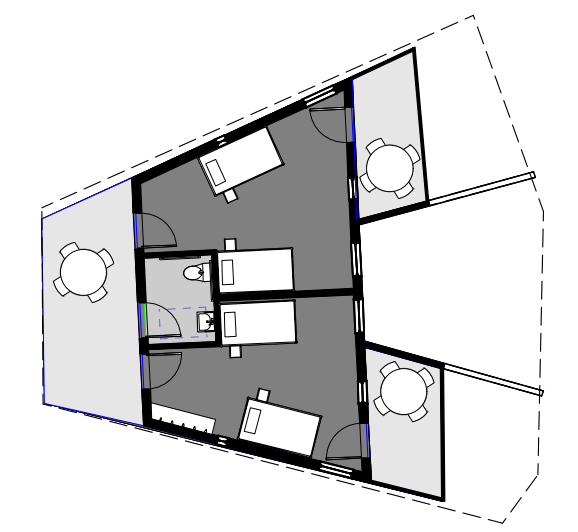
We go into the wilderness to get away from schedules. Sleeping in a woods cabin provides a balance of isolation, shelter and convenience. We enjoy sharing our love of adventure over bread-breaking in the lodge and stories on the porch. Here we find a community, where individuals and families make lifetime friends.



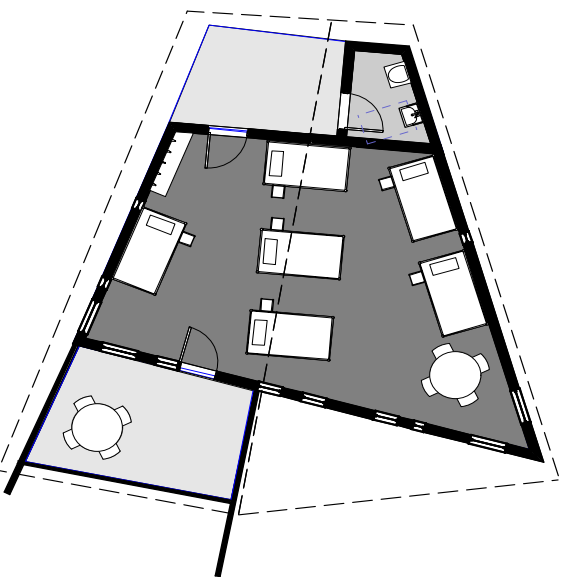
UTILITIES FLOW CHART



We enter our cabin and are pleasantly surprised with the unique, intimate view. Heat from wood pellets takes the chill off; the insulated CLT panels keep the room warm through the night. A composting toilet is conveniently located off the entry deck. In contrast, the full-season showers and sauna are a short hike away, enhancing the sense of adventure.



DOUBLE CABIN



BUNK HOUSE CABIN



INTO THE LODGE - connecting with kindred spirits

CLT LUMBER AND INNOVATION



Diagram 1 - CLT strategy
Pushing boundaries in the form and configuration of Mass timber buildings. Inspired by fractals, iceflows, pedals and ledge formation, to blend buildings into their surroundings

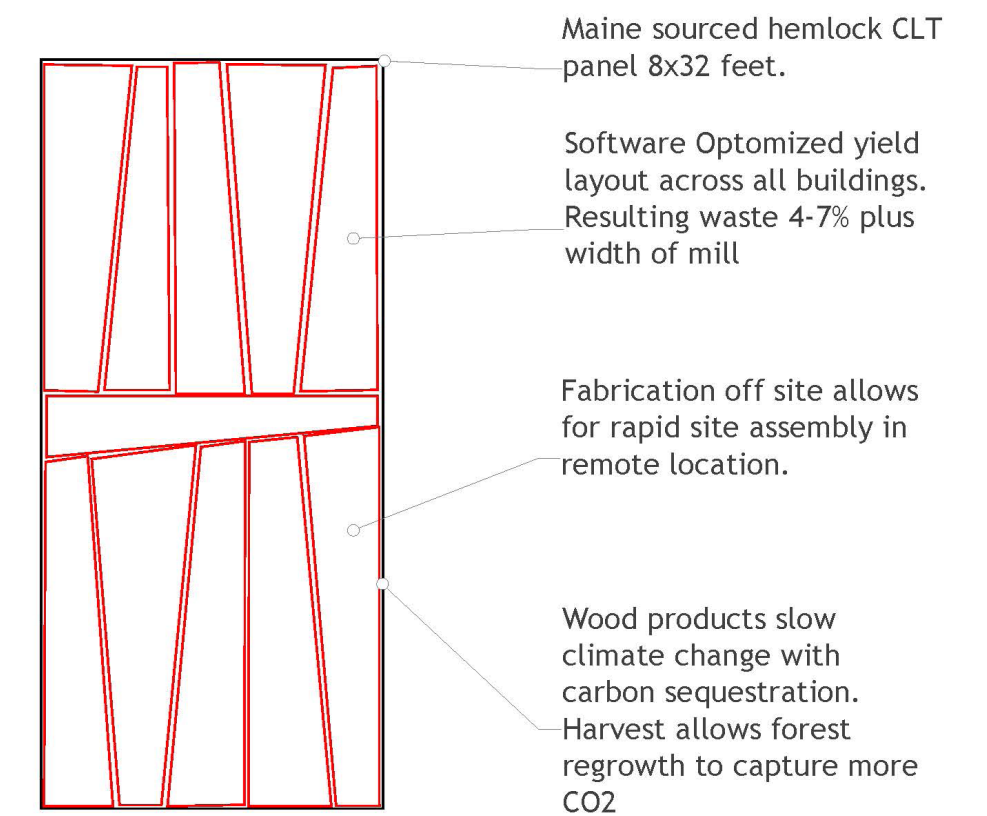
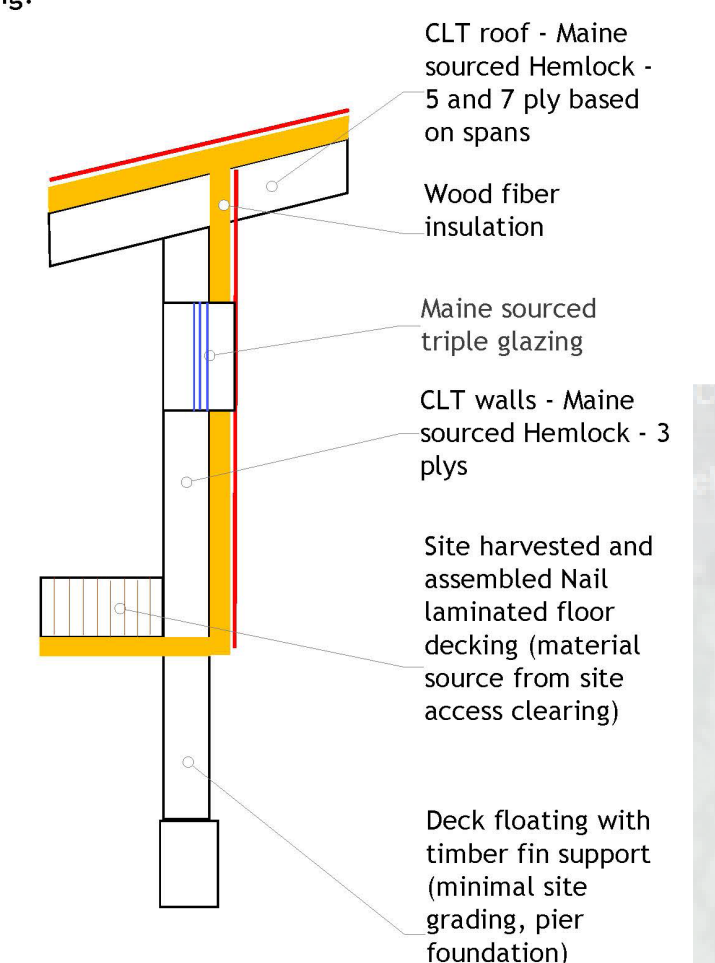
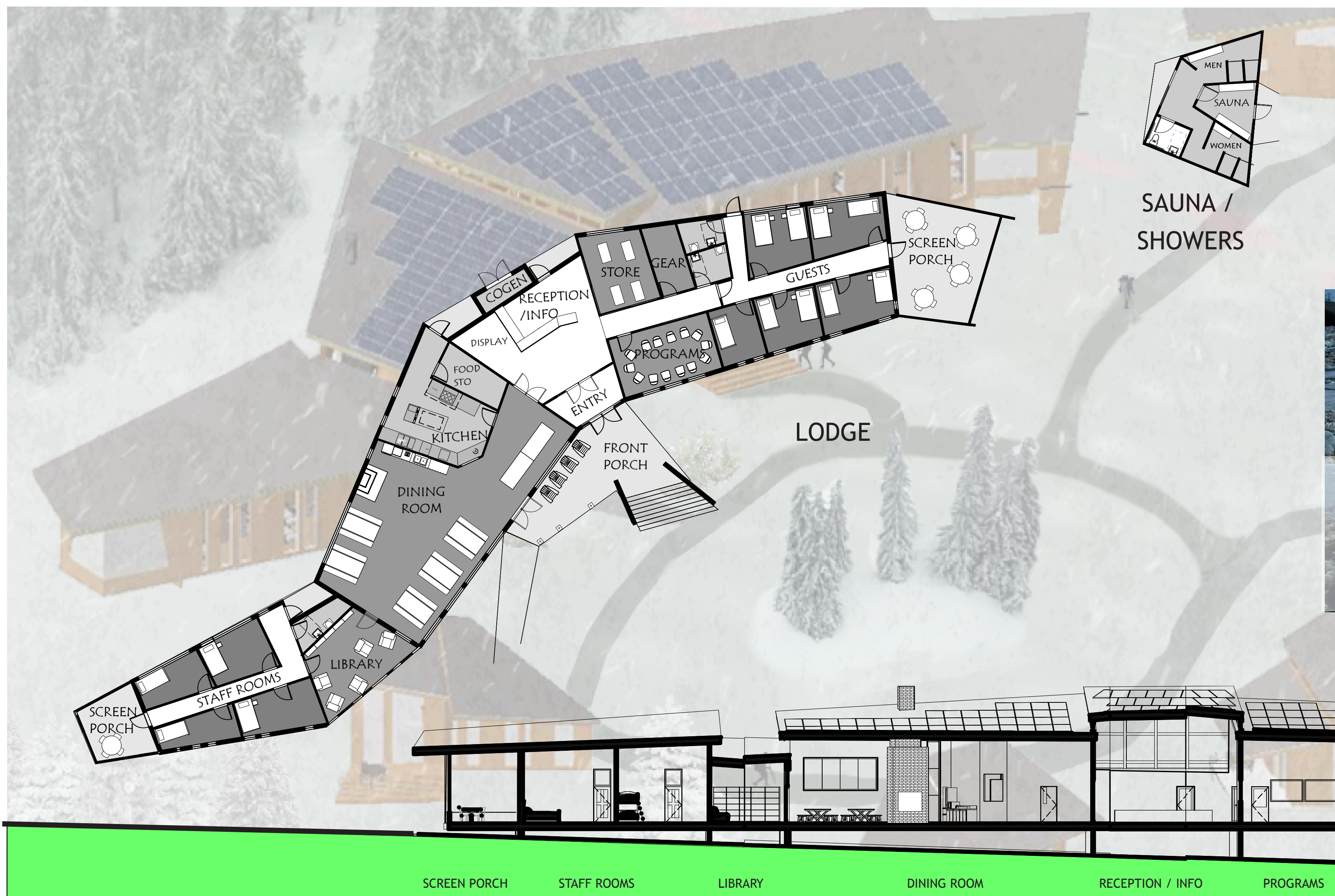


Diagram 2 Typical section
Structure and insulation from bio based, petroleum free sources. Local labor to assemble platforms and erect precision manufactured panels. Any site waste can be used for kindling.



Fellow hikers greet us from the south-facing front porch. We drop our packs and staff receive our inquiries about beds, food, weather, trails, and programs. We gear up in the store and join others for dinner and an evening program. In summer, we enjoy games of scrabble on the screen porch. On long winter nights, we head for the warmth of the sauna. The staff are friendly and accessible, but they enjoy private quarters.



The frozen northern landscape captures our imagination. Fractured ice on Caribou Pond is reflected in the angular and offset roof and wall panels, reminding us that distant cracking ice shelves impact our Northeast woods and coastline.