

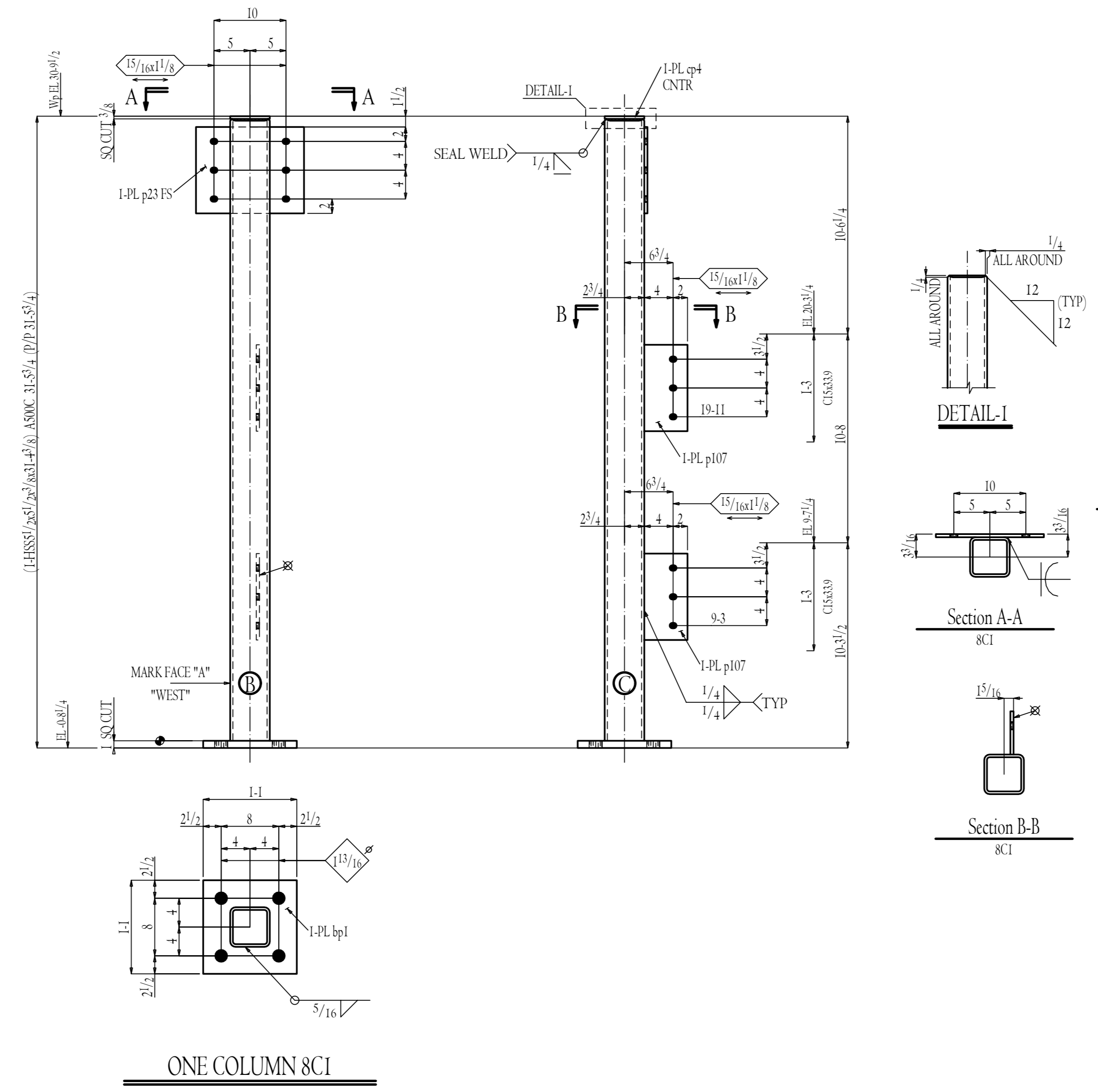
BILL OF MATERIAL

PIECE MARK	MINOR MARK	QUANTITY TOTAL	MATERIAL	LENGTH FT.	IN.	STEEL GRADE	REMARK
3	SCI		COLUMN			Galv	414
3	SCI		HSS8x8x3/8	31	4 3/8	S2E A500C	3539
18	a15		L6x7/16	1	0	A36	310
6	a4		L3x3/16	0	6 1/2	A36	27
3	p176		PL1x16	1	4	A36	218
3	p177		PL3/8x8	0	8	A36	20

Total weight : 414

BILL OF MATERIAL

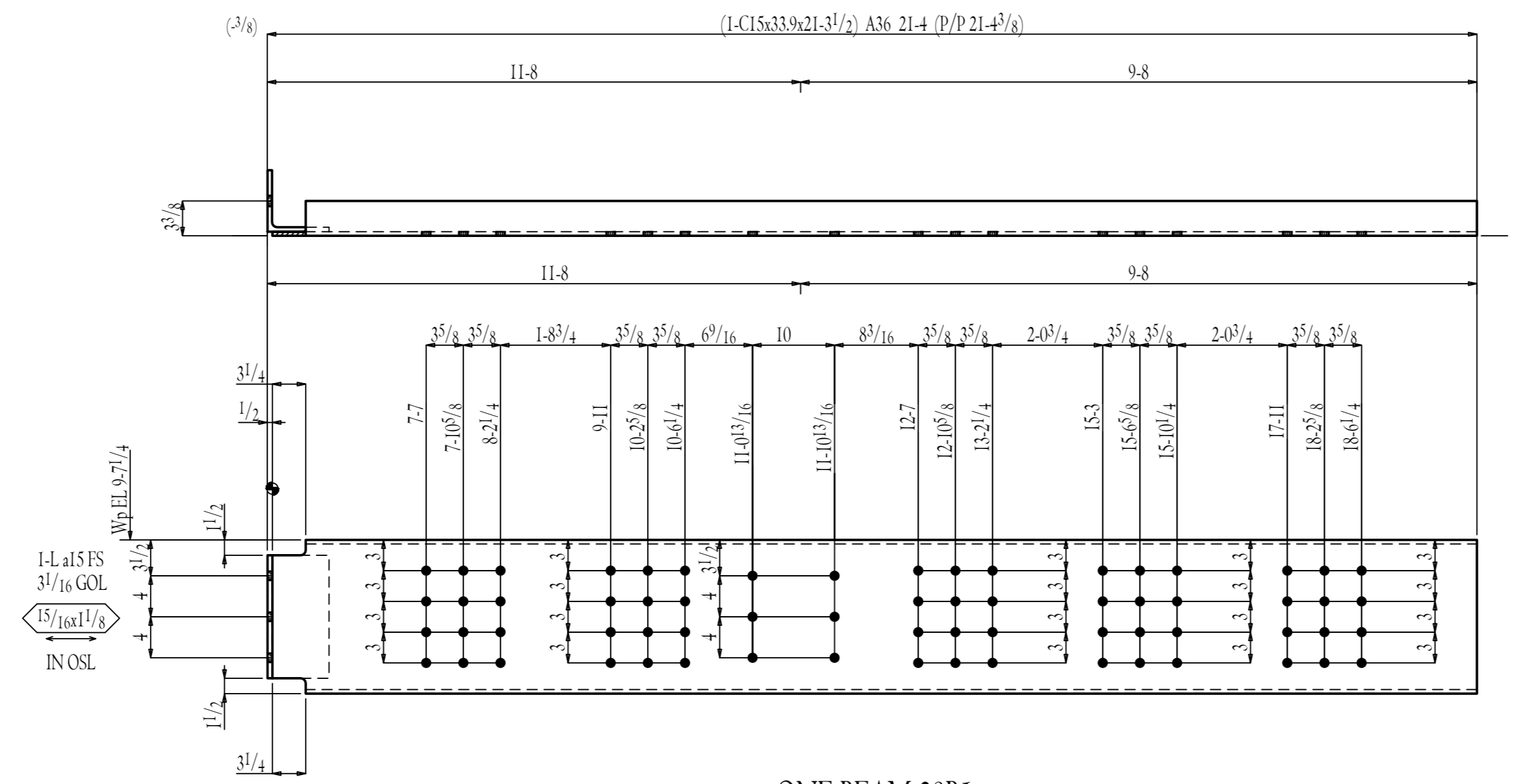
PIECE MARK	MINOR MARK	QUANTITY TOTAL	MATERIAL	LENGTH FT.	IN.	STEEL GRADE	REMARK
	ONE	8CI	COLUMN			Galv	871
1	8CI		HSS1/2x5 1/2x3 1/8	31	4 3/8	S2E A50C	779
1	bp1		PL1x13	1	1	A36	48
1	p23		PL7/16x12	1	3	A36	22
2	p107		PL7/16x6	1	0	A36	18
1	cp+		PL3/8x5 1/2	0	5 1/2	A36	3



Total weight : 871

BILL OF MATERIAL

PIECE MARK	MINOR MARK	QUANTITY TOTAL	MATERIAL	LENGTH FT.	IN.	STEEL GRADE	REMARK
	ONE	2881	BEAM			Galv	739
1	2881		C15x33.9	21	3/2	A36	722
1	a15		L6x7/16	1	0	A36	17
			FIELD BOLTS				
6			7/8 Dia A325	0	2/4	+1HD WASH	



ONE BEAM 2881

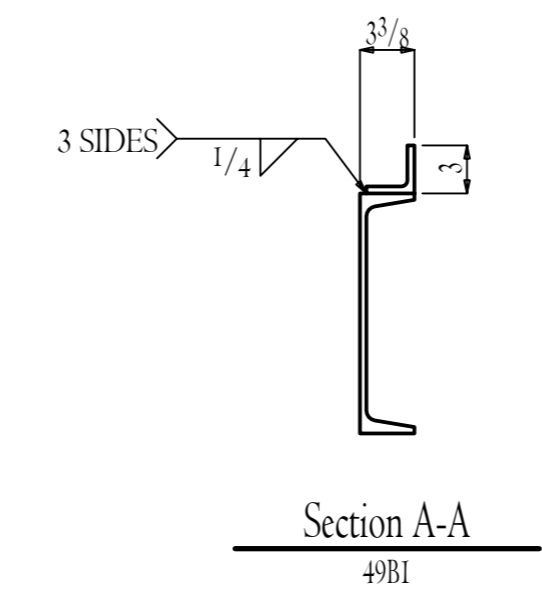
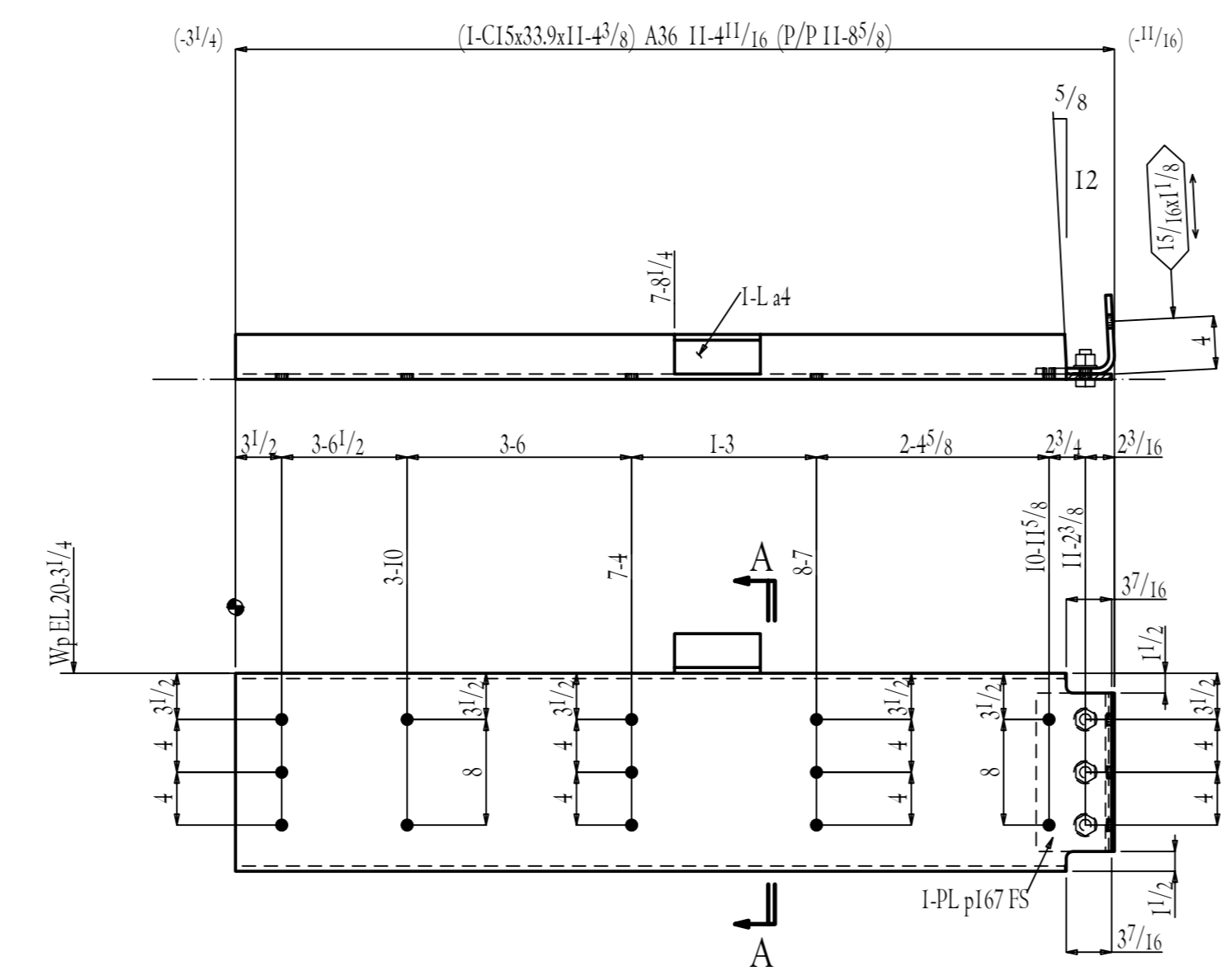
W	15x3/8
F	33/8x3/8
K	17/16x1

SHOP NOTE:
TOE DIRECTION FAR SIDE

Total weight : 739

BILL OF MATERIAL

PIECE MARK	MINOR MARK	QUANTITY TOTAL	MATERIAL	LENGTH FT.	IN.	STEEL GRADE	REMARK
	ONE 49BI		BEAM			Galv	409
1	49BI		C15x33.9	11	4 ³ / ₈	A36	385
1	a4		L3x2 ⁷ / ₁₆	0	6 ¹ / ₂	A36	4
1	p167		PL2 ¹ / ₁₆ x11	1	0	BENT A36	16
3			7/8 Dia A325	0	2 ¹ / ₄	+1HD WASH GALV	3
			HELD BOLTS				
2			7/8 Dia A325	0	6 ¹ / ₂	+1HD WASH +HENT GALV	
2			7/8 Dia A325	0	5 ¹ / ₂	+1HD WASH GALV	
6			7/8 Dia A325	0	5 ¹ / ₂	+1HD WASH +HENT GALV	
3			7/8 Dia A325	0	2 ¹ / ₄	+1HD WASH GALV	



ONE BEAM 49BI

LEFT END LOAD CAPACITIES:
 SHEAR: 42.9 KIPS
 W | 15x³/₈
 F | 3³/₈x⁵/₈
 K | 1⁷/₁₆x1

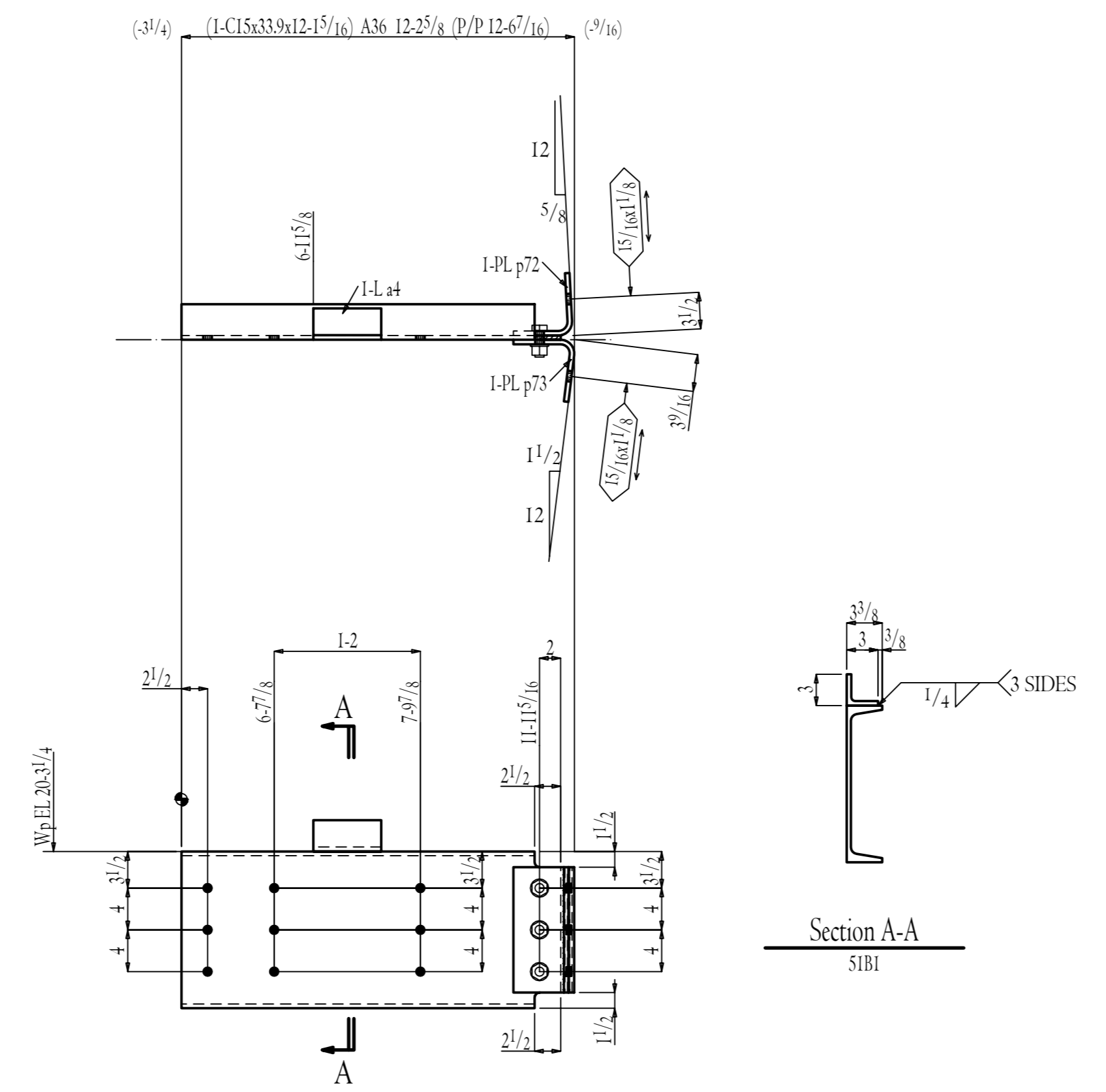
SHOP NOTE:
 TOE DIRECTION FAR SIDE

SHOP BOLTS:
 3-7/8x2¹/₄ A325 GALV

Total weight : 409

BILL OF MATERIAL

PIECE MARK	MINOR MARK	QUANTITY TOTAL	MATERIAL	LENGTH FT.	IN.	STEEL GRADE	REMARK
	ONE 51B1		BEAM			Galv	450
1	51B1		C15x33.9	12	15/16	A36	411
1	#4		L3x2x7/16	0	6 1/2	ST1 A36	4
1	p73		PL7/16x107/8	1	0	BENT A36	16
1	p72		PL7/16x101 1/16	1	0	BENT A36	16
3			7/8 Dia A325	0	2 1/2	+1HD WASH	3
			FIELD BOLTS				
9			7/8 Dia A325	0	2 1/4	+1HD WASH GALV	



ONE BEAM 51B1

LEFT END LOAD CAPACITIES:
 SHEAR: 64.8 KIPS

$W \ 15x^{3/8}$
 $F \ 3^{3/8}x^{5/8}$
 $K \ 1^{7/16}x1$

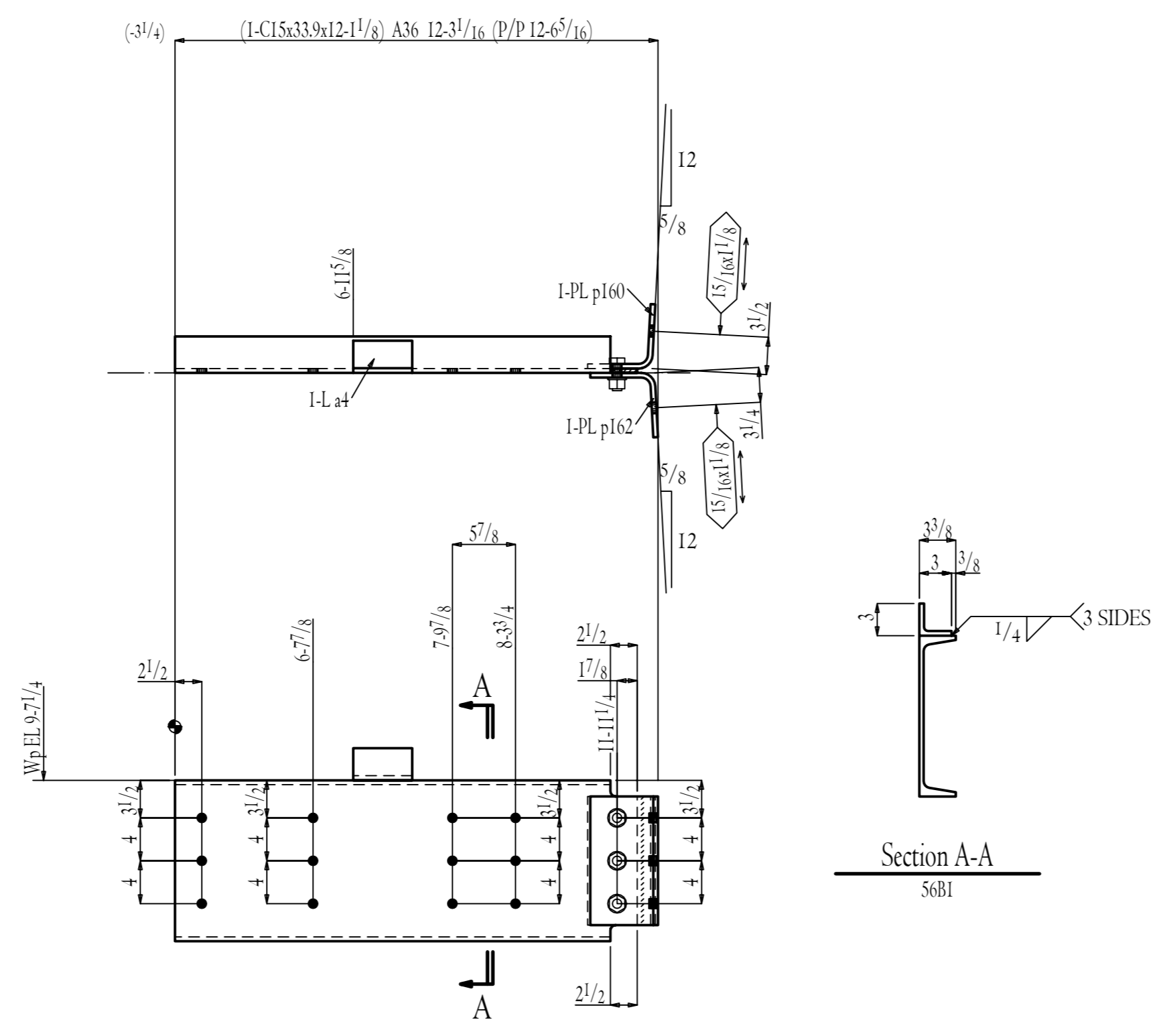
SHOP NOTE:
 TOE DIRECTION FAR SIDE

SHOP BOLTS:
 3-7/8x2 1/2 A325

Total weight: 450

BILL OF MATERIAL

PIECE MARK	MINOR MARK	QUANTITY TOTAL	MATERIAL	LENGTH FT.	IN.	STEEL GRADE	REMARK
	ONE	56B1	BEAM			Galv	451
1	56B1		C15x33.9	12	1 1/8	A36	410
1	#4		L3x3x7/16	0	6 1/2	A36	4
1	p160		PL7/16x113/16	1	0	BENT A36	17
1	p162		PL7/16x113/16	1	0	BENT A36	17
3			7/8 Dia A325	0	2 1/2	+1HD WASH GALV	3
			FIELD BOLTS				
12			7/8 Dia A325	0	2 1/4	+1HD WASH GALV	



ONE BEAM 56B1

LEFT END LOAD CAPACITIES:
SHEAR: 64.8 KIPS

$$\frac{W}{F} \left| \frac{15x^3/8}{3^3/8x^5/8} \right|$$

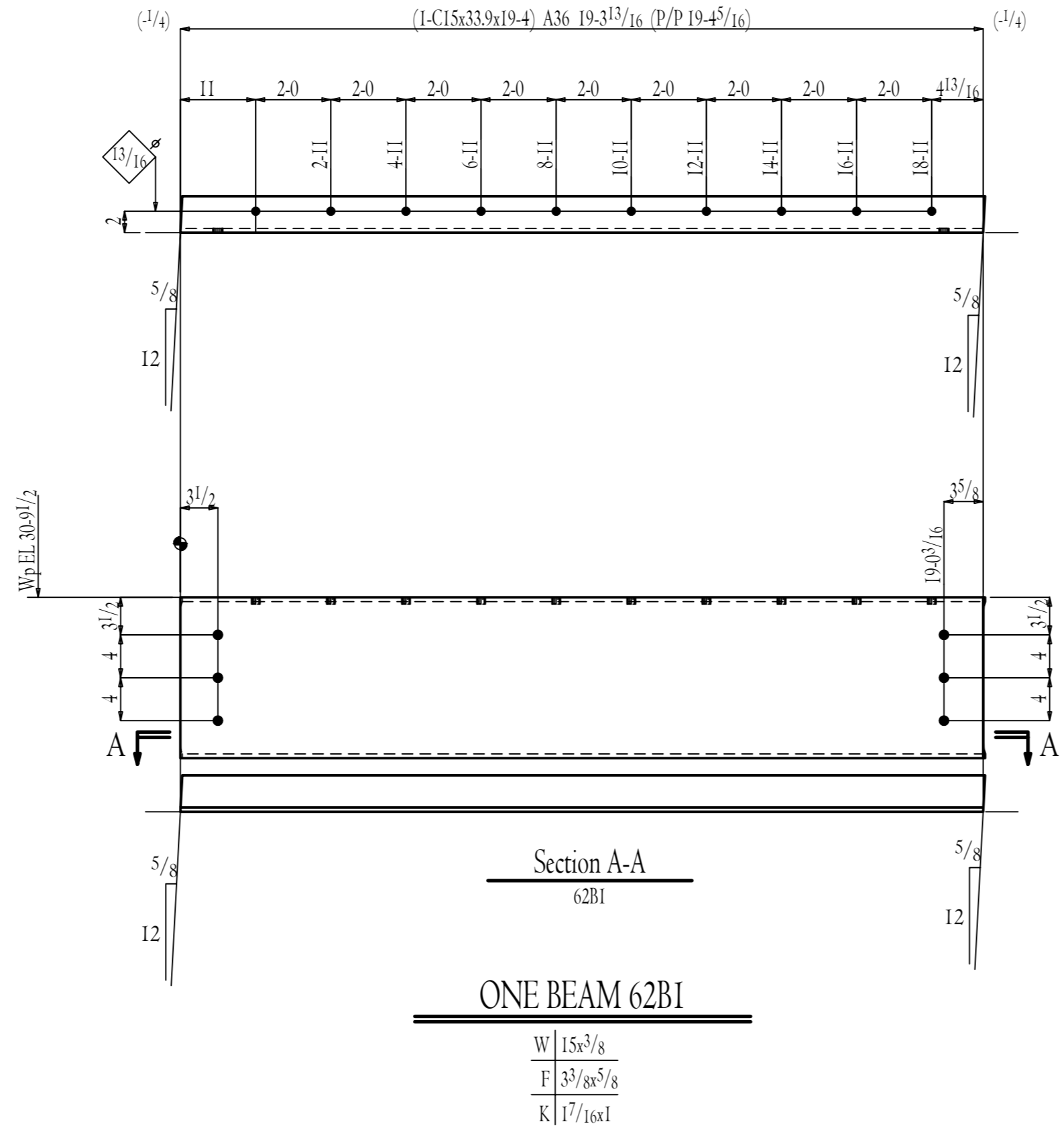
$$\frac{K}{17/16x1}$$

SHOP NOTE:
TOE DIRECTION FAR SIDE
SHOP BOLTS:
3-7/8x2 1/2 A325 GALV

Total weight: 451

BILL OF MATERIAL

PIECE MARK	MINOR MARK	QUANTITY	MATERIAL	LENGTH FT.	IN.	STEEL GRADE	REMARK
	ONE 62BI	BEAM				Galv	655
	1 62BI	C15x33.9		19	4	A36	655
		FIELD BOLTS					
	3	7/8 Dia A325		0	6 1/2	+1HD WASH +HINT	
	3	7/8 Dia A325		0	2 1/4	+1HD WASH	
	10	3/4 Dia A325		0	4 1/2	+1HD WASH GALV	

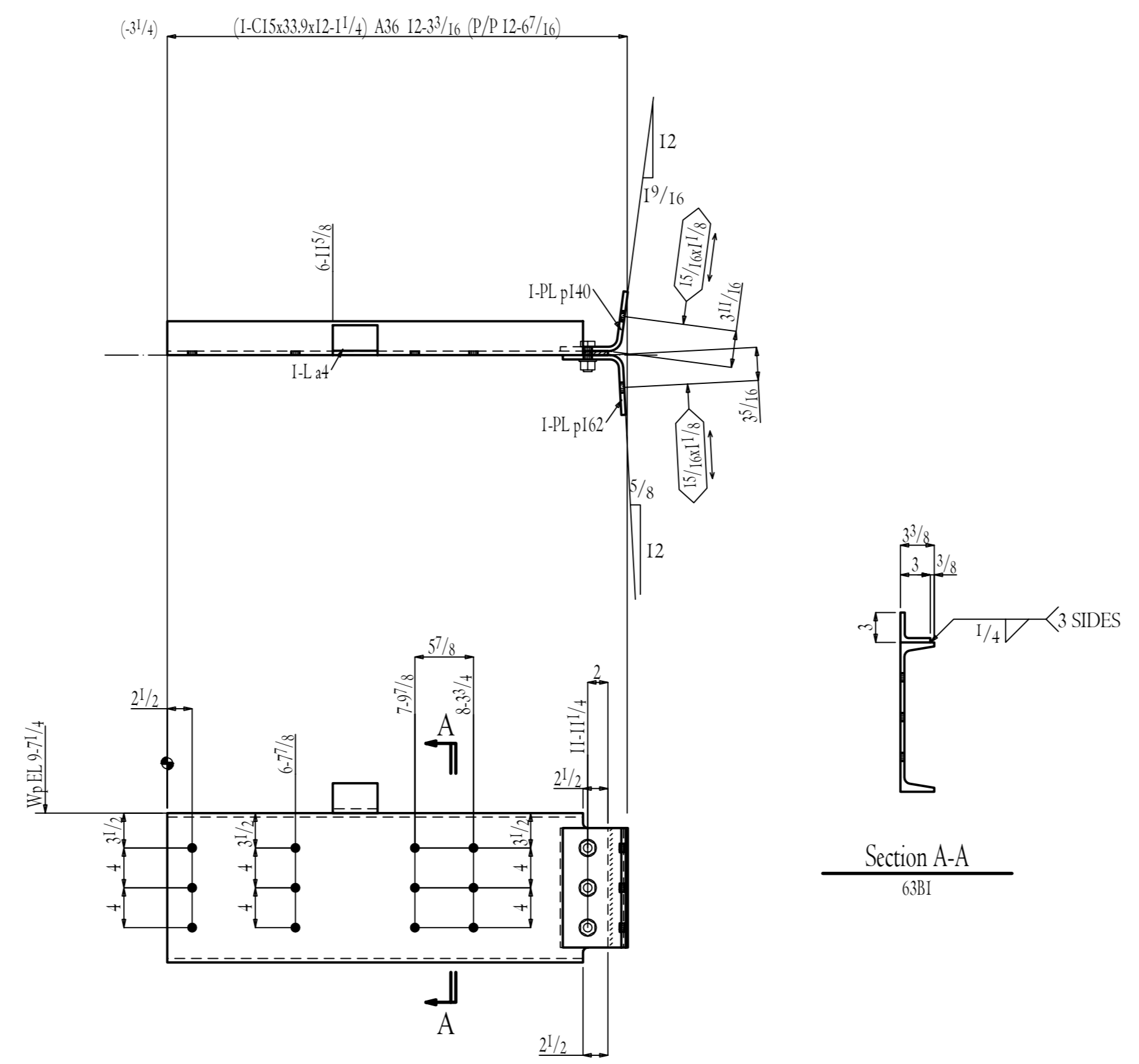


SHOP NOTE:
TOE DIRECTION FAR SIDE

Total weight : 655

BILL OF MATERIAL

PIECE	MINOR	QUANTITY	LENGTH	STEEL	
MARK	MARK	TOTAL	FT. IN.	GRADE	REMARK
	ONE	63BI	BEAM	Galv	451
1	63BI		C15x33.9	A36	410
1	∠		L3x3 ⁷ / ₁₆	A36	4
1	p140		PL7/16x11 ¹ / ₂	BENT A36	17
1	p162		PL7/16x13 ¹ / ₁₆	BENT A36	17
3			7/8 Dia A325	+1HD WASH GALV	3
			FIELD BOLTS		
12			7/8 Dia A325	+1HD WASH GALV	



ONE BEAM 63BI

LEFT END LOAD CAPACITIES:
SHEAR: 64.8 KIPS

$$\frac{W}{F} \frac{15x^{3/8}}{33/8x^{5/8}}$$

$$\frac{K}{17/16x1}$$

SHOP NOTE:
TOE DIRECTION FAR SIDE
SHOP BOLTS:
3-7/8x2¹/₂ A325 GALV

